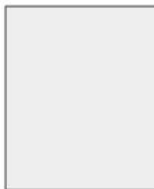


the akc museum of the dog

Memory Game

Directions: Cut on the dotted line on the next two pages to create cards of the artworks from the collection. Once all the cards are cut out, place all of the cards face down on a flat surface like a table or the floor. Carefully mix the cards while they are faced down. Now flip one card and look at the image, then flip another card and see if it is the same image. If the second card is the same image, then you can keep the two cards. If the second card is not the same image as the first card, then you flip over the two cards face down again. Continue to flip two cards at a time and see if you can find the matches.

If you want to make it more challenging, then you can give yourself a time limit for finding all the matches.



Not a Match.

Match!



Whitehall at Westminster,
Rosalan Trigg.



Words of Comfort,
J. Alden Weir



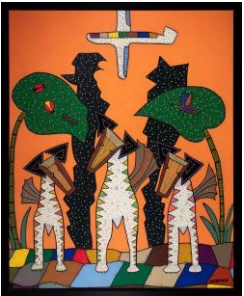
"Queen" Carousel Piece,
Looft Factory



Bulldog Fawn/Black Hat and Jacket,
Royal Doulton



Pug Band,
Unknown Artist



The Bravos,
Alfredo Gracia Aguilar



Airendales,
Arthur Wardle



Ch. Windholme's Market Rose,
Gustav Muss-Arnolt



Golden Retriever at the Museum,
Tom Mosser



French Bulldog, S.
Raphael.



Gyantse-Palko Chode Monastery Dogs,
Constance Coleman



Portrait of Dog,
Edwin Megargee



Have You Seen My Earring?
Linda M. Budge



Enzo,
Karen Brand



Mrs. Brown of Birchwood,
Dorothy Hardcastle



Pet Spa,
Yumi Heo



Parallel Parking,
William Wegman



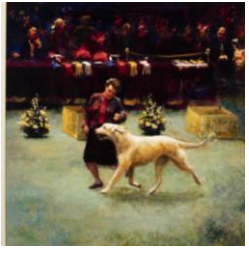
What Will He Do With It?
George W. Horlor



Black Labrador,
Hellen Wilson Sherman



Sandstorm in Duna,
Laura Zito



Whitehall at Westminster, Rosalan Trigg.



Words of Comfort, J. Alden Weir



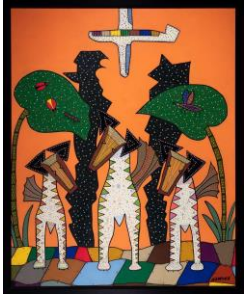
"Queen" Carousel Piece, Loeff Factory



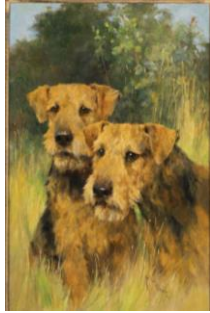
Bulldog Fawn/Black Hat and Jacket, Royal Doulton



Pug Band, Unknown Artist



The Bravos, Alfredo Gracia Aguilar



Airendales, Arthur Wardle



Ch. Windholme's Market Rose, Gustav Muss-Arnolt



Golden Retriever at the Museum, Tom Mosser



French Bulldog, S. Raphael.



Gyantse-Palko Chode Monastery Dogs, Constance Coleman



Portrait of Dog, Edwin Megargee



Have You Seen My Earring? Linda M. Budge



Enzo, Karen Brand



Mrs. Brown of Birchwood, Dorothy Hardcastle



Pet Spa, Yumi Heo



Parallel Parking, William Wegman



What Will He Do With It? George W. Horlor



Black Labrador, Hellen Wilson Sherman



Sandstorm in Duna, Laura Zito

the akc museum of the dog

L W U E J V U Q X S U R U F L S A M G J W L C W K T S O O K
T O W C A U N C G M D E L R X G W Z O Q Q P R M J I O M L U
U P U X J I I Y V Q O Z O E D J B A J U X T Z N B R Z B C W
Y U I I G S Z N N L E A I N Q B I L D H N M Z E C W J X Y W
C R T E S E T U I X Z F I C P G R H U K R T R M T Y U Q B E
B H X J Q E P I L J L V D H D W Q P G J C I A P M K R V N K
R Z U S Q P U S V Q T E C B H X S Q P K A I F I D T L Q L H
Q V U O X X Y G F V P R Q U X S U J R N B R R A N V K K M E
N F Q G D Y C C È B X H R L G V G A H T E V X E V D T F S Z
Q K Y Z J K P M B N C J S L V U B U V H P C F H D A T I S P
I Q E J R R W A S Q E X G D G R S F D I H F S P J E R J O P
Z C Z U J E Z C Q B Q L L O V K A K N O Q Q T A Z F R F P C
P R F M X D G B D S E V A G Y U I H U W M X Y E N C U F Q G
C A F R D E J I V J C P A M F W T S O G M B J O H R H G E Y
B Z R B O G V Z P L X B R L B Q A A H P K N H L A C E D C S
O I Z K G B T H O V Z F C T D E I E N H U C I B M I O F U L
M P J T S P Q L A J O A P C M E R L A C I N L D L L T J Q H
E L S O L K C Y N M C N D T C D S T H B I J P V C S E N E J
Z N A T E H C A M D E R F Z D J A R G M P T Y E C K O F P L
E P A W D D C M N D O I X T X B N I F W C S C C T F K J I P
F F D D Y I C R F Y E Y H J J I G I A E E K B R U F W D D G
O B W D F N J Y W O Q M L I U Y T R D V L Q P N A H O E T L
A J K A U R V P R Q M L Y M H H W K N V T U A W S U V M U T
C H E S A P E A K E B A Y R E T R I E V E R W I U R P N V A
X Y X H W X R Y B Z U A B T I X B Z H O W N A P O C V F Z Q
Q S R A P H A E L U E L G A E B N I S J G W F Y W J E T D X
Q K H L A H W H F X L K Q N L H M P I M R Z A T T N V H F E
B E Y Z B L S C L F B Q H E L T P S U A T L Q L J M R V S B
D A N Q P E Y Z Y F T E X X C Y L E X X T Q N E I V W U Y V
M J E P J O I Z Q M N Y M I J R X L C Y J F M E Y N V Q D I

Beagle	Afghan Hound	S. Raphael	Dogsled
Chesapeake Bay Retriever	Bichon Frise	Frederick Daws	Royalty
Paw	Siberian Husky	Louis-Eugène Lambert	Lace
Bark	Fred Machetanz	Leash	Park
French Bulldog	Fur	Mountain	Arctic

the akc museum of the dog



Dog Breed: Bloodhound

Artwork: *Brigadier*

Artist: Reuben Ward Binks

Fun Fact: Bloodhounds are renowned for their sense of smell. Technology has yet to beat a Bloodhound's nose in tracking a scent to the end of the trail.



Dog Breed: Chihuahua

Artwork: *Ch. Kay's Don Feleciano*

Artist: Roy Andersen

Fun Fact: An ancient Mexican dog, the Chihuahua is the team name of the minor league baseball team of El Paso, Texas.



Dog Breed: Great Dane

Artwork: *Great Dane Standing at the Shore*

Artist: Maud Earl

Fun Fact: Although Great Danes are the tallest dog breed in the world, these giants are super affectionate and kind with small children and dogs.



Dog Breed: Kerry Blue Terrier

Artwork: *Kerry Blue Terriers*

Artist: Edwin Megargee

Fun Fact: Kerry Blue Terriers are born black, but as they grow up their coats fade to a lighter blue-gray. Their coats become a full slate gray by 18 months.

the akc museum of the dog

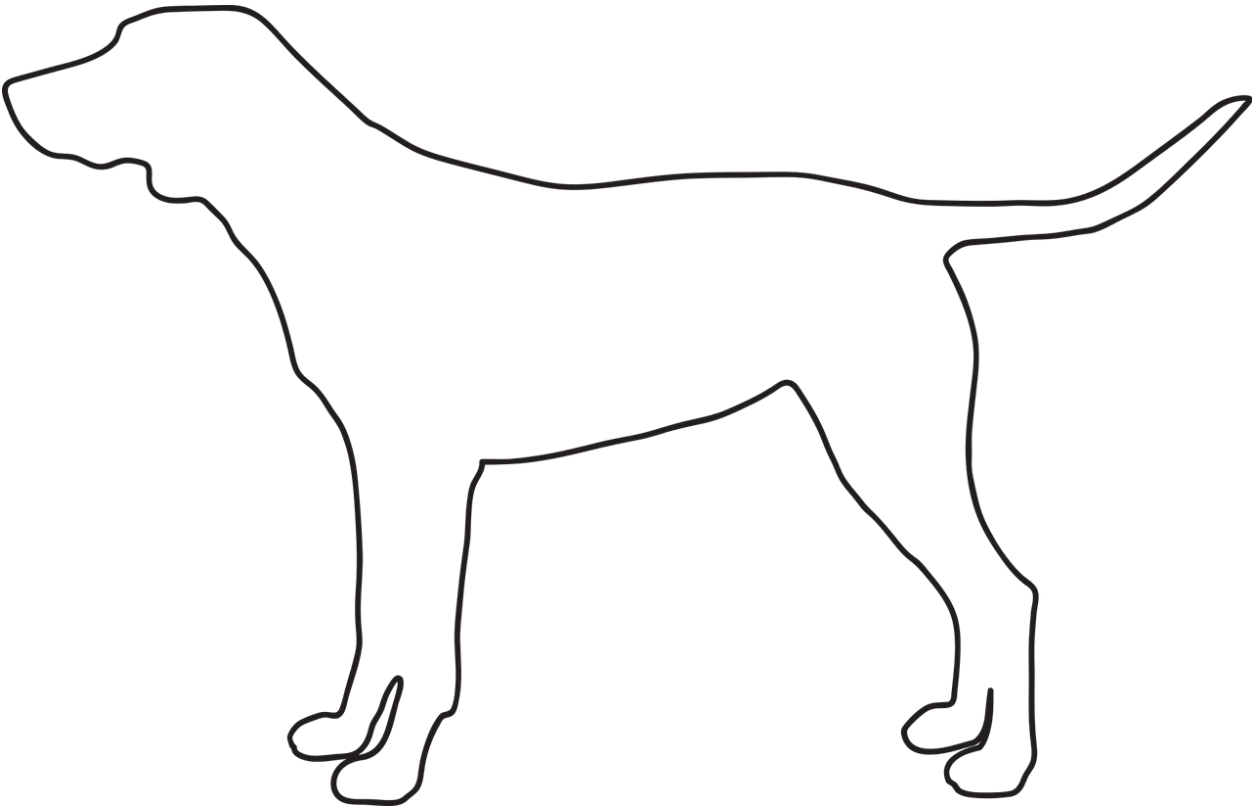
Did you know that one of the first American Dog breeds is the Chesapeake Bay Retriever. Chesapeake Bay Retrievers, nicknamed Chessies, are large water dogs and great bird hunters. Duck hunters in the Chesapeake Bay area in Virginia and Maryland bred several types of dogs, including Newfoundlands and Irish Water Spaniels, to create an amazing water companion. Chessies have webs between their toes and a curly double coat, which helps them swim in cold waters. They come in several different colors ranging from brown, sedge (red-brown), and deadgrass (bronde).

Create your own Chessie!

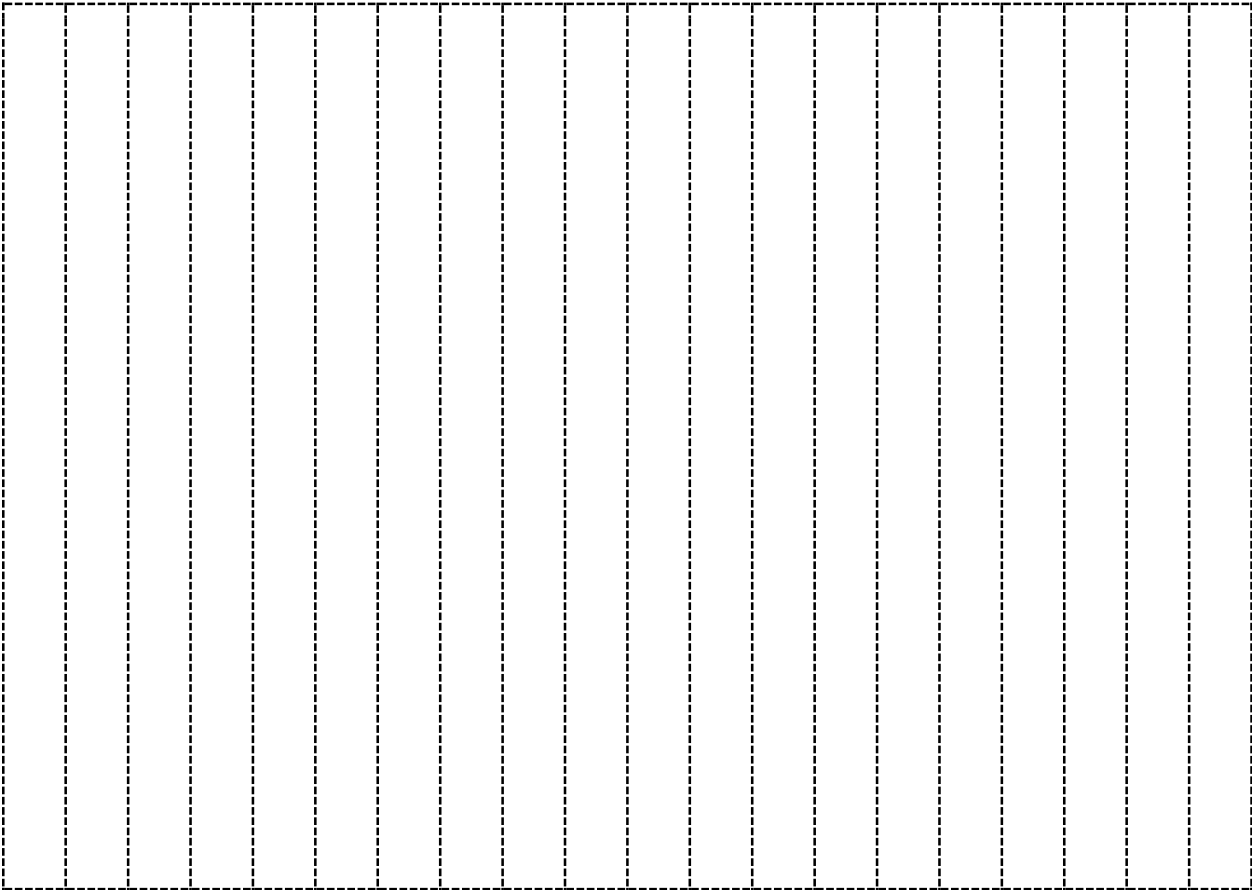
Below is an outline of a Chessie and strips of paper. Cut out the outline and strips of paper. Color the strips of paper and dog cut-out with a marker or pencil in one of the colors a Chessie can be (brown, red-brown, blonde). Carefully curl the strips of paper and glue or tape the curls to the Chessie.

Tip: Wrap the pieces of paper around pencils or pens of varying widths to create different size curls.





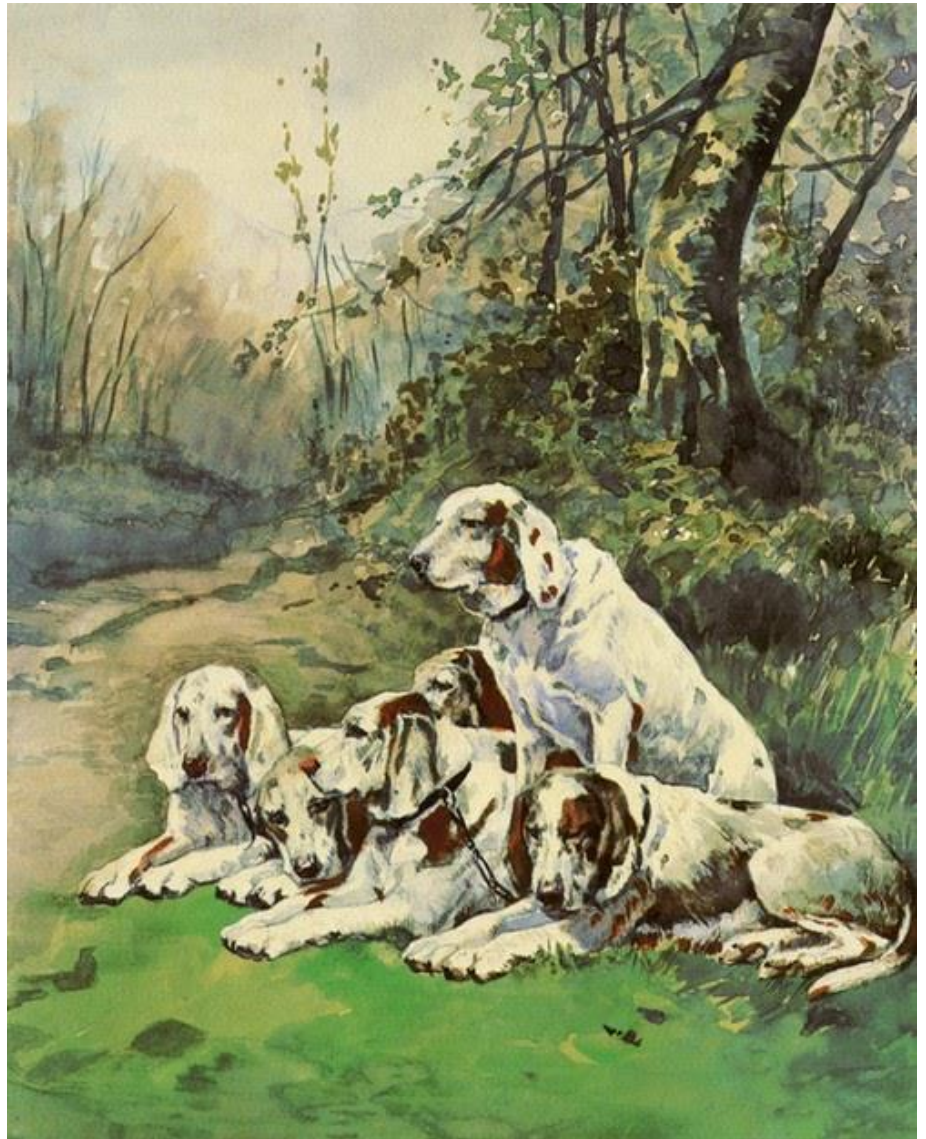
Strips of paper to cut:



Dogs in Comfort

Henriette Ronner was a Dutch artist who studied art in Belgium. Although it was more challenging for women to be successful artists in the 1800s, Ronner had a very supportive family. Her father encouraged her to dedicate her life to painting and Ronner was successful in Holland and Germany.

One of the reasons Ronner's paintings of dogs were popular was her choice to paint dogs in natural poses. Other animal painters during the time positioned the dogs in formal poses to show off the dog's look. However, Ronner's paintings presented dogs in comfortable poses that mirror real canine behavior. An example of Ronner's natural poses of dogs can be seen in the watercolor below called *After the Hunt*, which shows dogs relaxing on their stomachs after a hunt.



Peaceful Pooch

Create an image of dogs relaxing like Henriette's painting above. You can think of a relaxing place you like as the setting of the drawing. Add dogs to this peaceful scene in comfortable poses like on their stomachs or relaxing on their backs.



What relaxing place did you draw and why?
